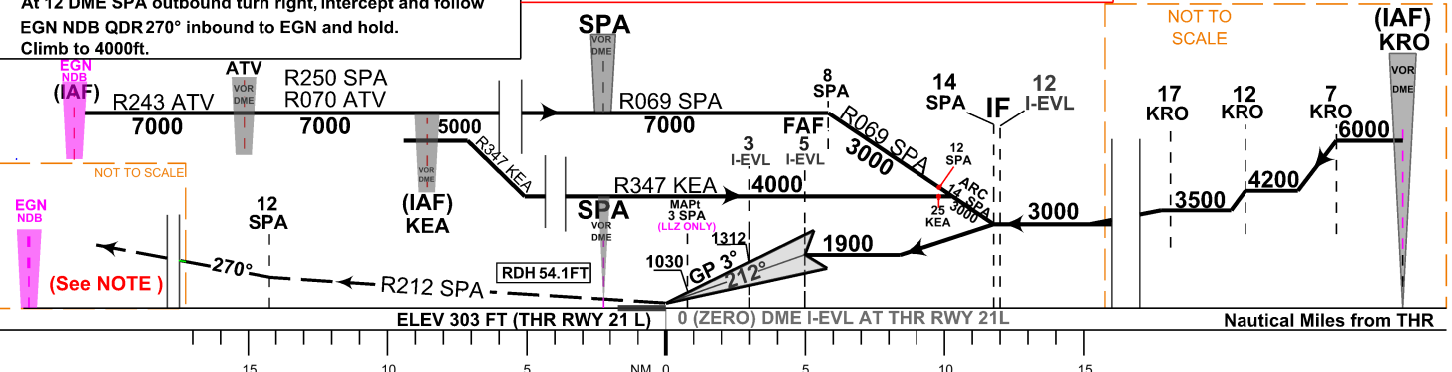




MISSION APPROACH:
Climb straight ahead to SPA. Intercept and follow R212 SPA.
At 12 DME SPA outbound turn right, intercept and follow
EGN NDB QDR 270° inbound to EGN and hold.
Climb to 4000ft.

NOTE : To execute,after a Missed Approach,a new approach procedure to RWY 21L. CONTINUE CLIMB IN HOLDING TO 7000ft.

TRANSITION ALTITUDE 9000 FT



OCA / H				A	B	C	D	D _L
STRAIGHT-IN APPROACH	<div> <div>ALT. HEIGHT W.R.T. AID ELEVATION</div> <div> <div>4HR RWY 24L</div> <div>4HR RWY 24R</div> </div> </div>	CAT I	FT	503 / 200				
		CAT II	FT	403 / 100				
		LOC ONLY	FT	1030 / 722				
CIRCLING			FT	1200/892	1300/992	N / A		

Rate of descent				
nm/h	100	135	160	185
ft/min	530	717	849	982

LLZ RECOMMENDED ALTITUDE

DISTANCE I-EVL DME	4	3	2
ALTITUDE 5.2% APPROACH	1631	1312	994